



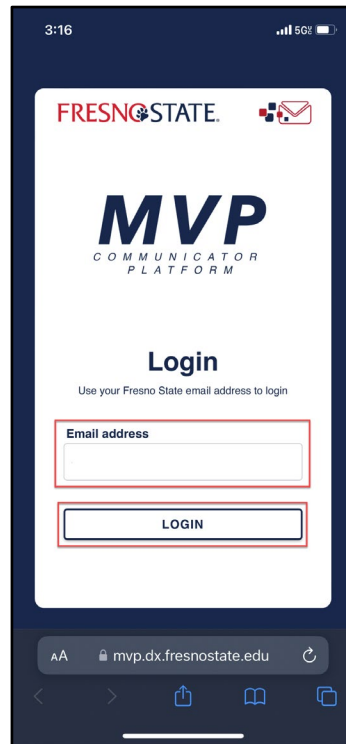
# MVP Communicator: Getting Started

Student User Guide

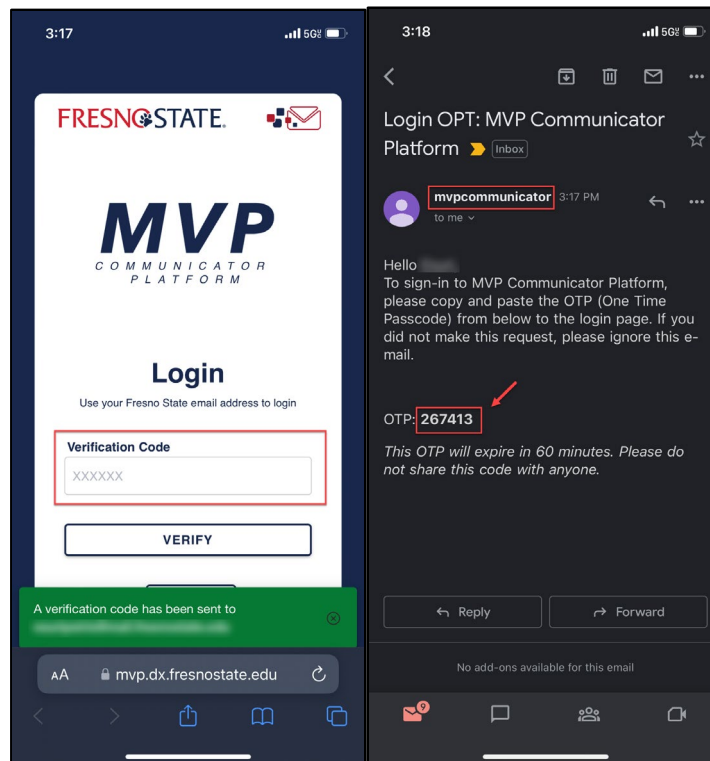


## How to Log in

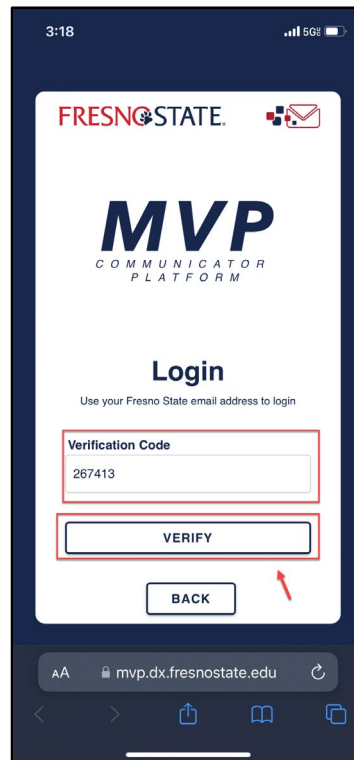
1. Log in to the MVP Communicator with your Fresno State assigned email.



2. After selecting “LOGIN” you will be redirected to the verification code page and notified that a verification code has been sent to your email inbox.

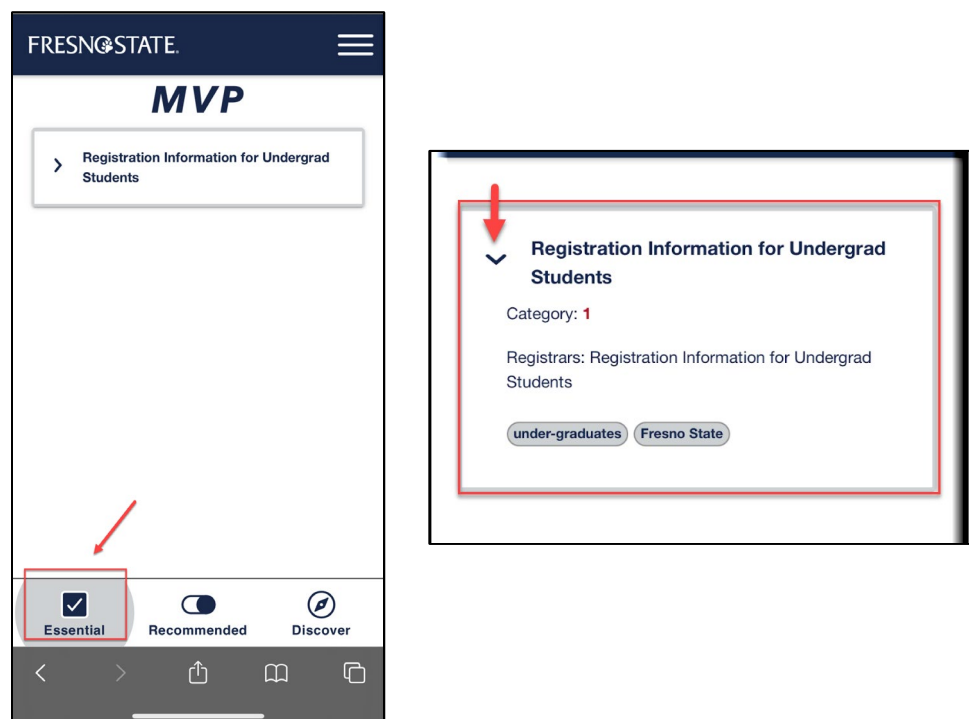


3. Enter the verification code into the “Verification Code” field and select VERIFY.



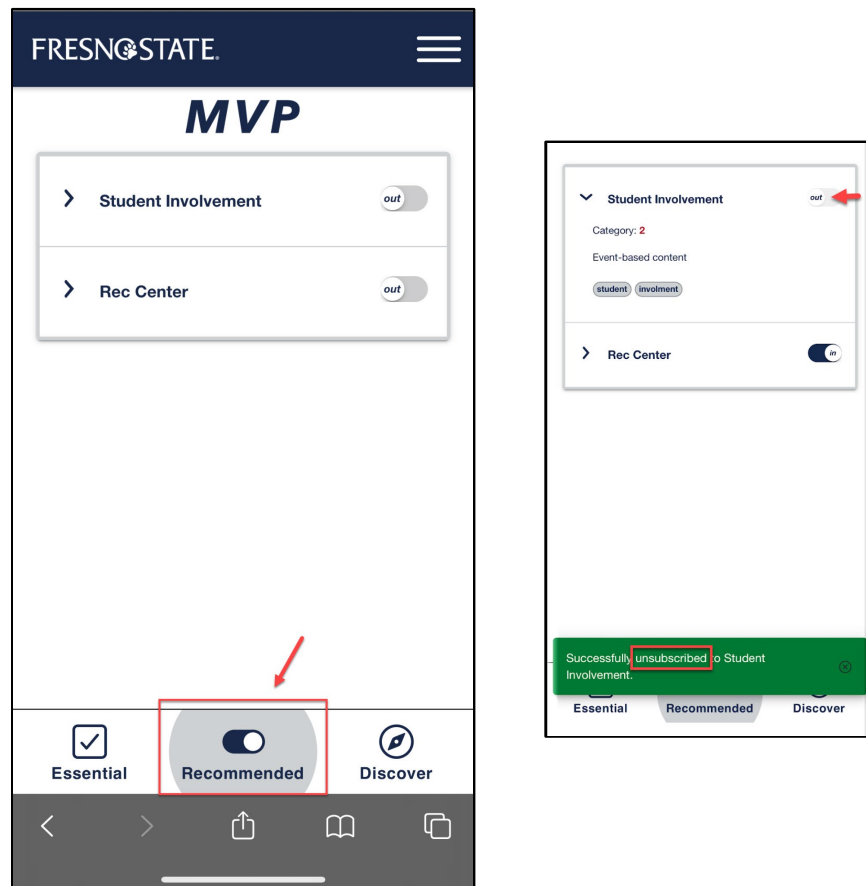
## What is the Essential Tab

1. Channels located in the Essential Tab are channels that distribute information from the University that you are required to receive. While you can not unsubscribe from these channels, you can view information about the channel by clicking the dropdown.

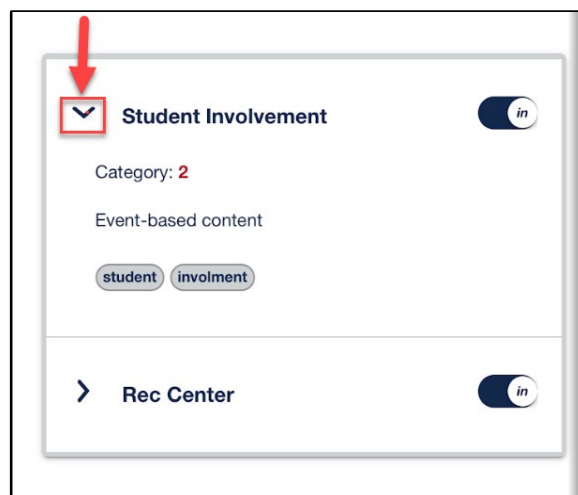


## What is the Recommended Tab

1. Channels located in the Recommended Tab are channels that distribute information from the University that you are recommended to receive. You will be automatically subscribed to these channels BUT can subscribe and unsubscribe at any time by clicking the toggle button.

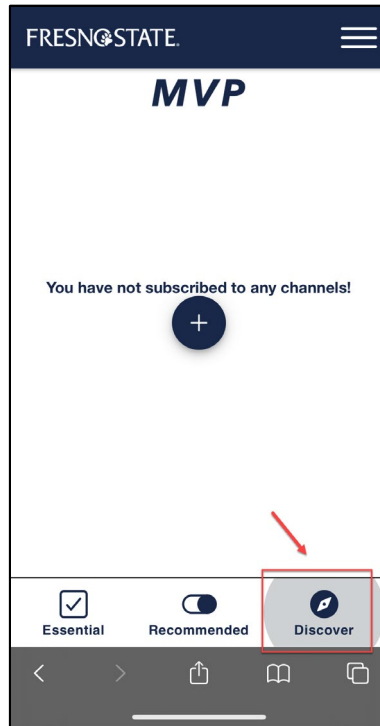


2. To view channel information click on the dropdown



## What is the Discover Tab

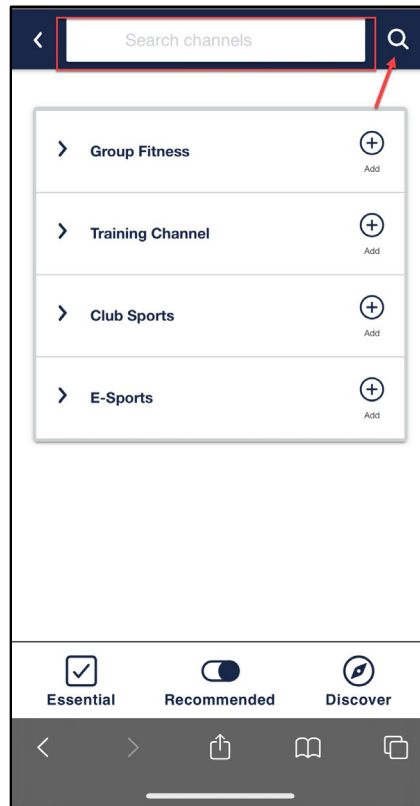
1. Channels located in the Discover Tab are channels that you can search for and subscribe to fit your preferences.



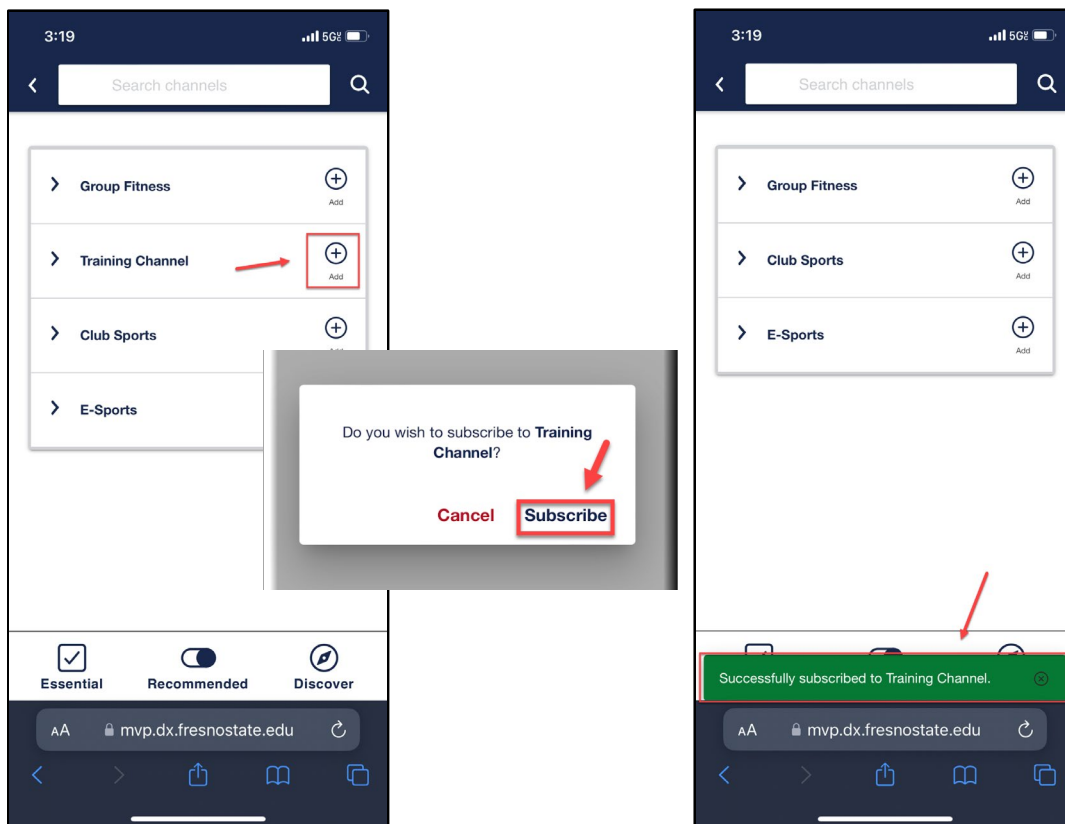
2. To add channels to your Discover Dash select the add button located in the middle of the screen. Please note once channels appear in your dash the add button will move to the lower right corner.



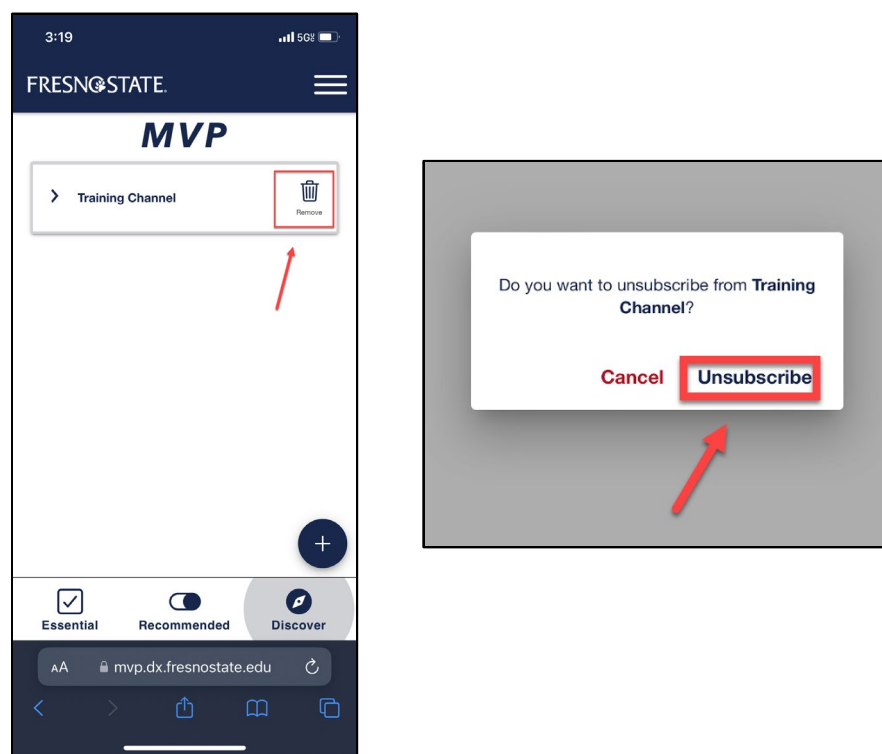
3. Use the search bar or scroll through the list of available channels to find channels that interest you.



4. Click the add button to add a channel to your dash.



5. To unsubscribe from a channel in your Discover Dash select the trash bin icon.



## How to Log out

1. Click the menu icon located in the upper right corner.
2. Select log out.

